



2026 POST SEASON

The image features a dark gray background with several realistic, reflective bubbles of various sizes scattered in the corners. The top-left and bottom-right corners have clusters of bubbles, while the top-right and bottom-left corners have fewer, more isolated bubbles. The bubbles have highlights and shadows, giving them a three-dimensional appearance.

CLARIFICATIONS / GUIDANCE / PROCEDURE

*Pitch Count Clarification per CIF-SS and CBUA:

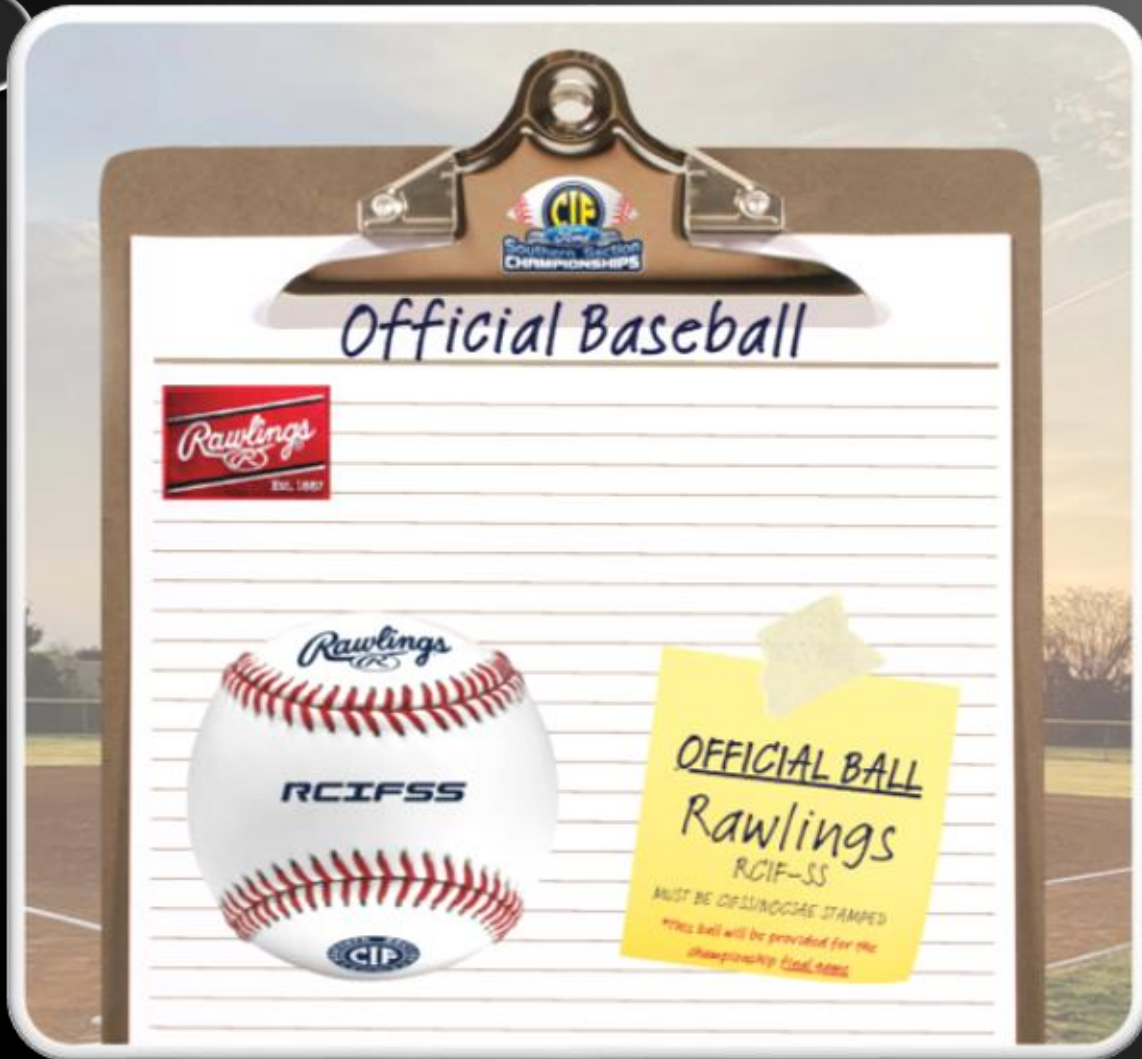
- DO NOT involve yourselves with pitch count
- Coaches and only coaches must verify with each other
- IF there is a dispute, inform the coaches that this is settled on an admin level not on field
- Play the game, do not delay the game, do not involve yourself in the dispute
- School Admin needs to contact CIF-SS afterwards, they will make a decision that does not involve us
- Plate umpire establish comms with school, follow up with crew
- Crew DO NOT reach out to school, PU will do this then follow up with you, If PU has not reached out to the crew, reach out to PU
- DO NOT case the field in the 1st & 2nd rounds...these are our fields.
- 3rd round and beyond it is suggested that you case the field in plain clothes
- Warn/Restrict/Eject
 - Acknowledge the comment the first time, advise if it continues warning will be issued
 - Be clear and demonstrative with the warning
 - Be clear and demonstrative with the restriction
 - Be clear and demonstrative with the ejection
- * Leave no action taken in question

2026 CIF Southern Section Baseball Playoffs, the Rawlings RCIF-SS baseball will be the mandatory baseball for all playoff games.

The home team will be responsible for supplying the required baseball for all playoff contests, beginning with the wild-card games and in each round to follow.

If the proper ball is not provided:

- Give the HOME team an opportunity to provide the proper baseballs
- DO NOT provide ANY information regarding future sanctions
- Play the game
- Report immediately after the game to Phil



Rule changes for 2026

1-6-3

No player shall wear any audio (microphone) or video (camera) device during the game.

2-10-3

P2P = 2 or more defensive players.

1 P2P while on defense, not more than one player-to-player meeting during an inning. Umpires shall deny any subsequent defensive team requests for that half-inning.

After the pitcher's warmup is completed, infielders may briefly gather at the pitcher's mound. This **will not be charged** as a player-to-player meeting.

Comms issues ARE NOT P2P, PU must go with F2 and signal "NO CHARGE"

3-1-4a

If a pinch-hitter or pinch-runner for the DH is used, that player becomes the new DH.

POINTS OF EMPHASIS

Discipline

It's expected that a coach will ask for an explanation on an unusual play. It is not expected that a coach will continue the discussion after receiving an answer to his question.

- If coach comes out:
 - They must declare a question
 - Inform the coach that they **MUST** go back to the dugout/box before you huddle
 - Inform the coach that they **CANNOT** come back out to argue/discuss

In the huddle:

- **ONLY** discuss the declared question
- Have information
- I have no information IS information
- Have an exit strategy

POINTS OF EMPHASIS

Sportsmanship (Bench Jockeying and Props)

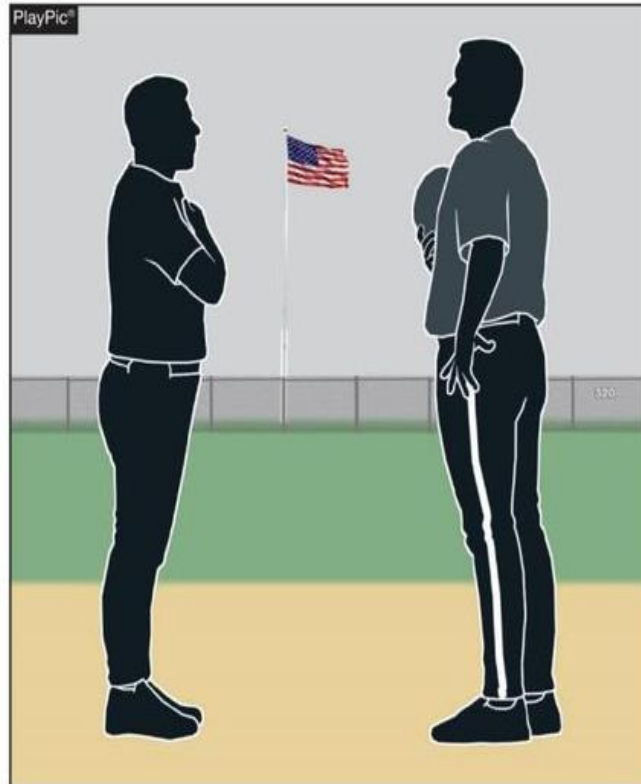
By rule, bench jockeying (3-3-1-f-2) is prohibited.

It is not only considered unsportsmanlike behavior, it can, without appropriate game control by umpires, lead to further, sometimes serious, problems.

Also, there is no logical purpose to have props at an education-based athletic event. The dugout should be a place of encouragement and unity. Let the game be decided by skill, preparation and respect, not by unnecessary noise and antics

Post Anthem Standoff

National anthem standoffs do not reflect the mission of education-based athletics. Staring down opponents after the national anthem to try to intimidate them or refusing to leave the respective baseline before the other team departs is poor sporting behavior.



After the Nation Anthem:

- U1 has the First Base Line
- U3 has the Third Base Line
- Line

USE OF EYE BLACK



- The high school game is now experiencing eye black that is being used as face decoration, with images and/or sayings being drawn on the faces of players to try to intimidate and/or taunt an opponent.
- Existing sportsmanship rules are available to **prohibit any use of eye black in an inappropriate or unfavorable way.**

POINTS OF EMPHASIS

Proper Pitching Positions

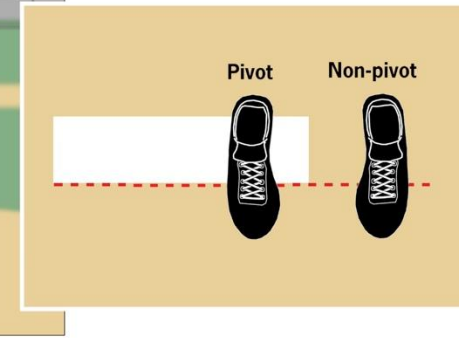
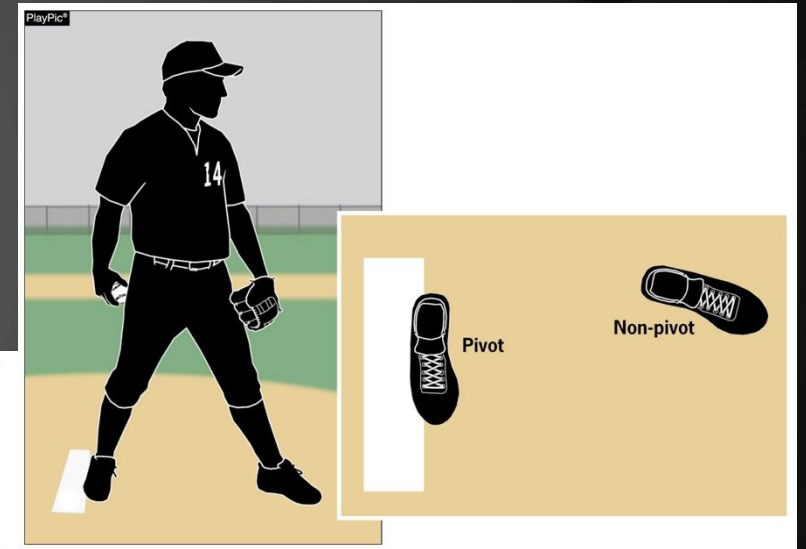
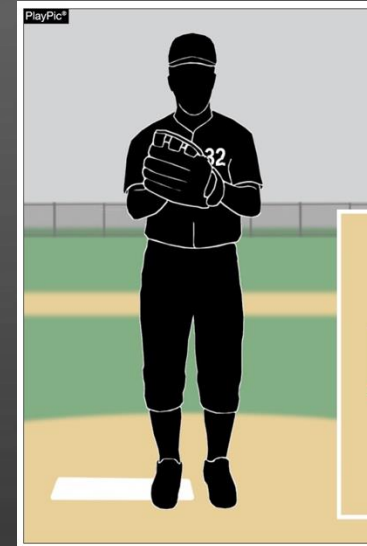
If a pitcher's pivot foot is in contact with and parallel with the pitcher's plate, he is considered to be in the set position.

Must come to a complete and discernible stop before delivering a pitch. Any other foot placement will be considered a windup position.

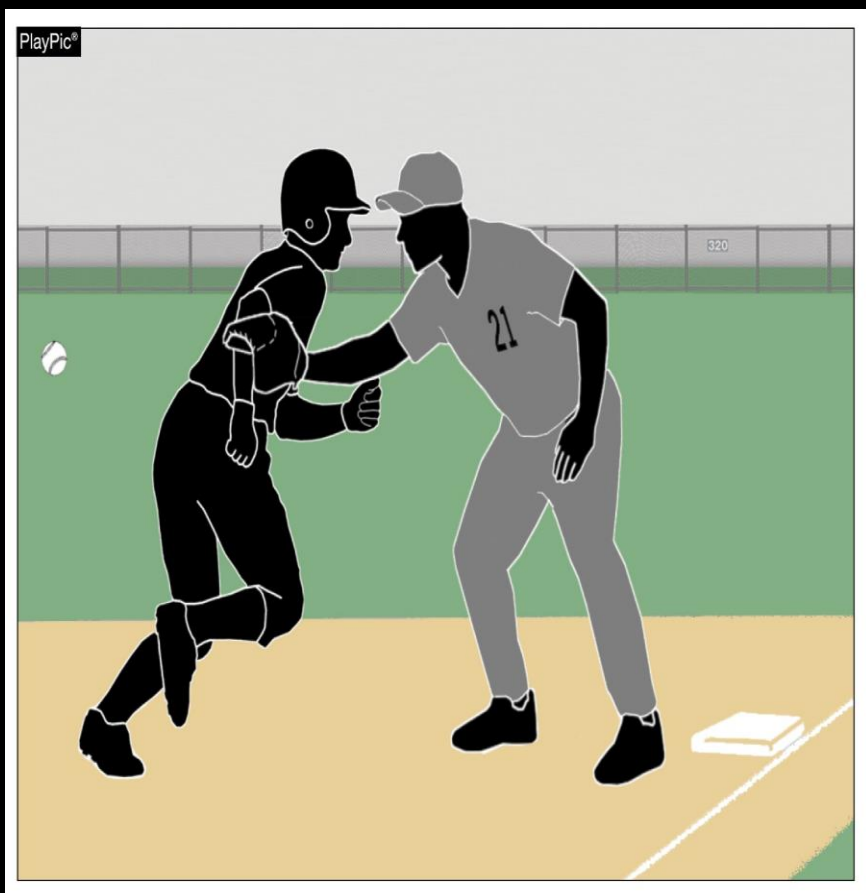
Running Lane Awareness

Remember, the purpose of the running lane rule is to:

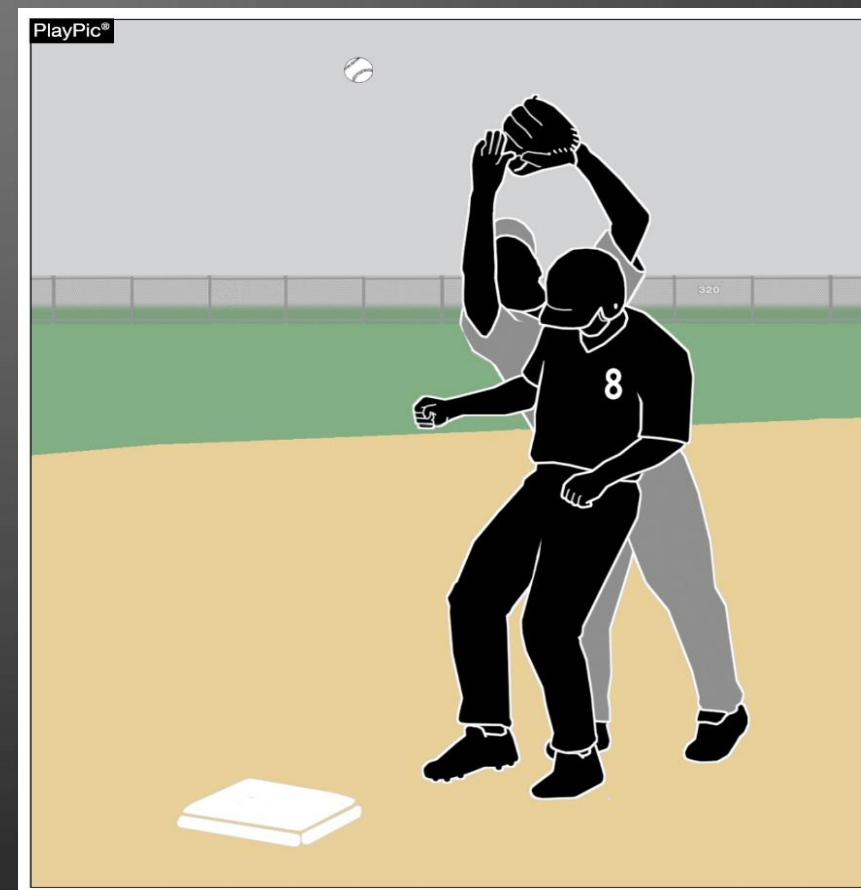
- Provide for safety by preventing collisions or the batter/runner and fielder.
- Provide for fair play by avoiding unfair interference with defensive plays.
- Provide for consistency by regular enforcement of the rule.
- F2 MUST throw the ball
- Immediate dead ball



[Defense]
OBSTRUCTS



[Offense]
INTERFERES



The background is a dark gray gradient. In the top-left and bottom-right corners, there are several realistic-looking bubbles of various sizes, some overlapping, with highlights and shadows that give them a three-dimensional appearance.

Three Man System Notes

Rotate:

ALL:

- Homerun
- Triple
- R1 into third
- Double Tag (R1 & R2)

PUSH:

U1 & U3:

- Runners in scoring position
- R1 & R2
- R1 & R3
- R2 & R3
- Bases loaded

U1:

BR into 2B, base hit double

PU:

- Stay home w/ runners in scoring position

Slide:

U1 & U3

- R2 only
- R3 only

U1:

BR into 2B, IF...U3 is pinned on F/F, R3 rundown, less than 2 out

PU:

- Stay home w/ runners in scoring position

PU:

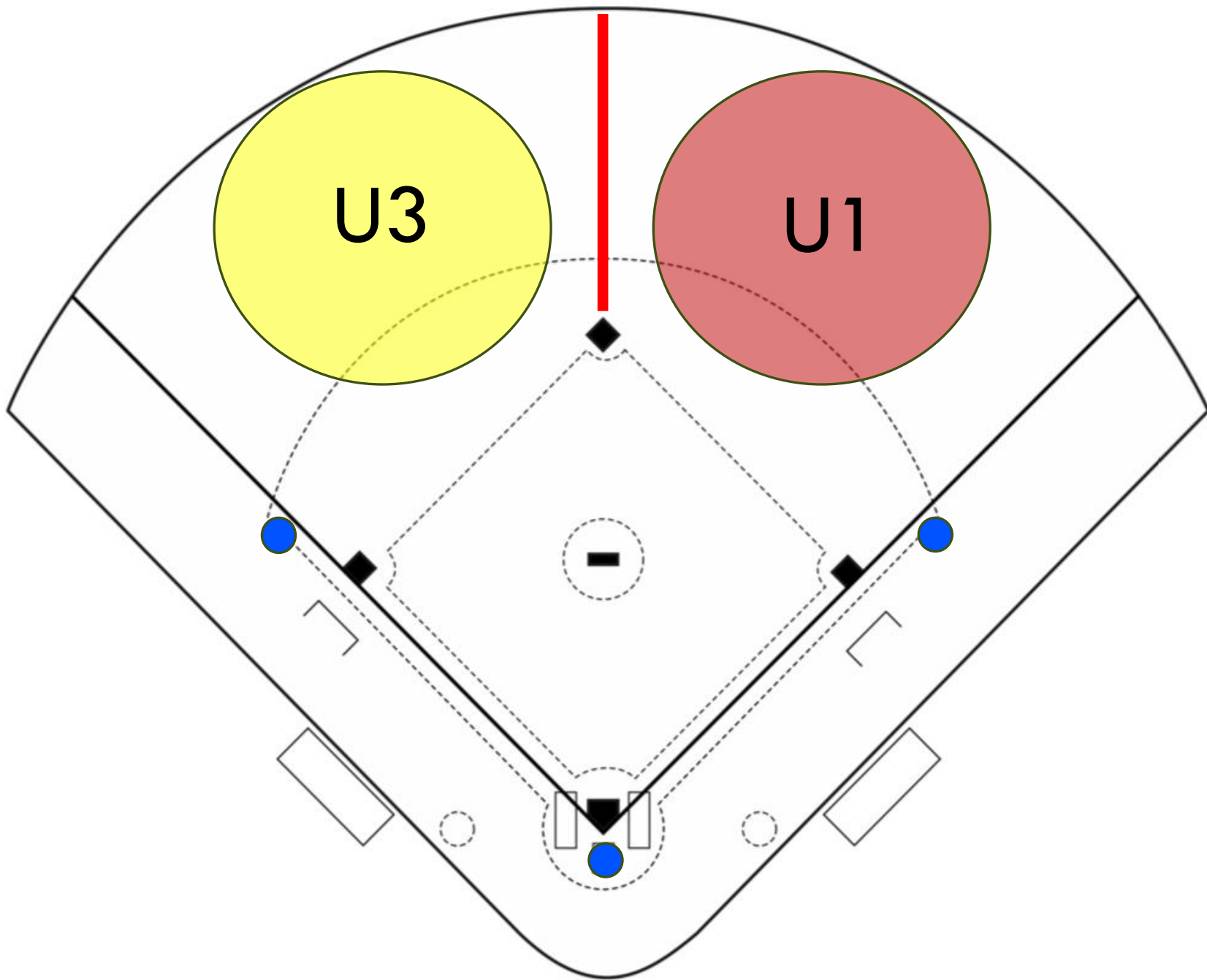
- Has NO fly ball coverage with bases empty other than foul territory behind/around the plate/front of the dugout
- DO NOT run to the mound on fly balls/base hits/balls in the infield
- DO NOT rotate to 3B on ground balls

Avoid:

- 2 umpires in the outfield
- 2 umpires at a base
- Trouble ball, no one out
- Chasing base hits into the out field
- Going on routine flies
- Unattended Ball and runner into a base
- U1, Taking plays in foul territory

U1:

- MUST pivot/cut on all fly balls in U3's coverage area



Bases Empty:

U1 will QB all flyball reads with bases empty.

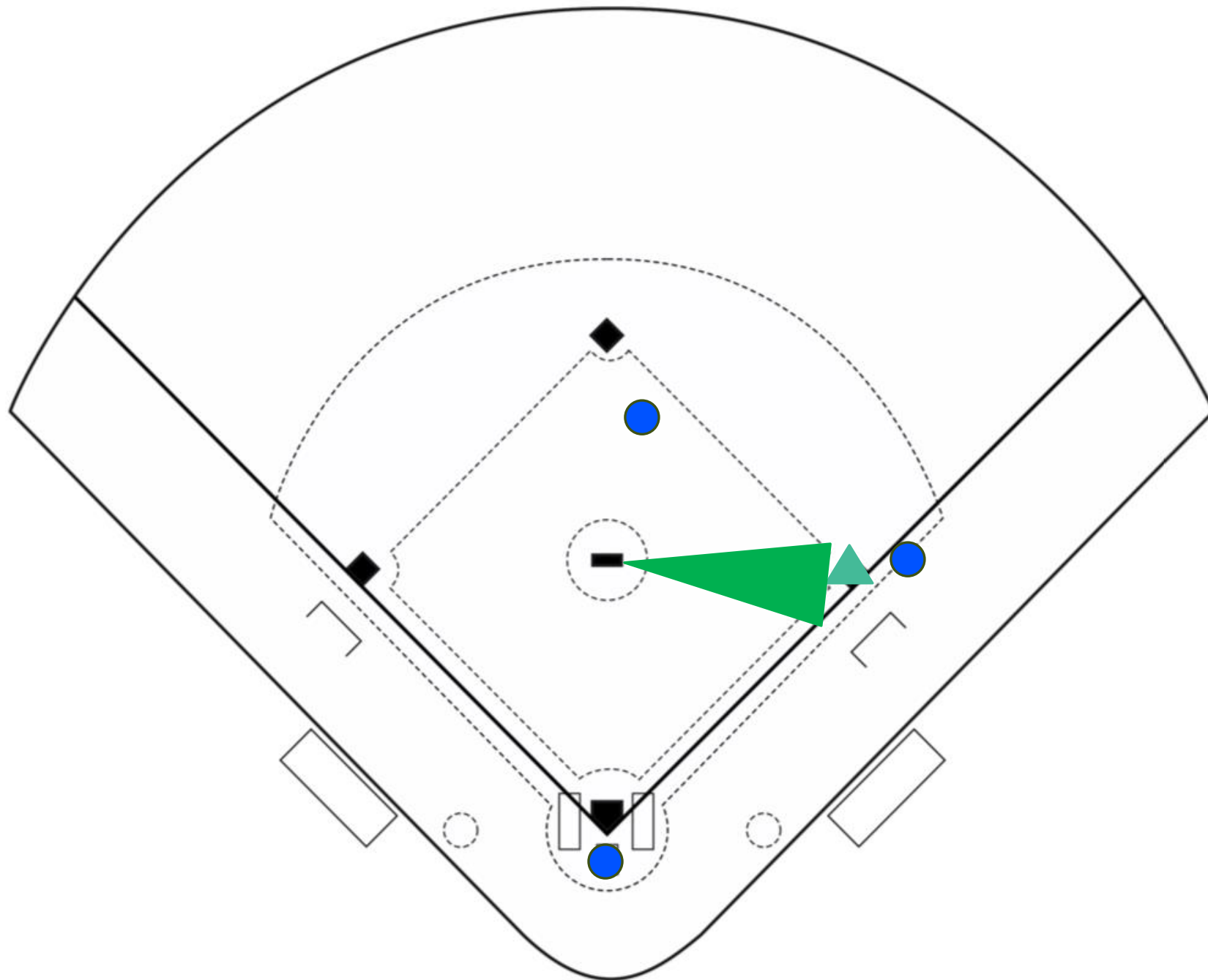
U1: P/R/R

U3: R/R/R

PU: R/R/R

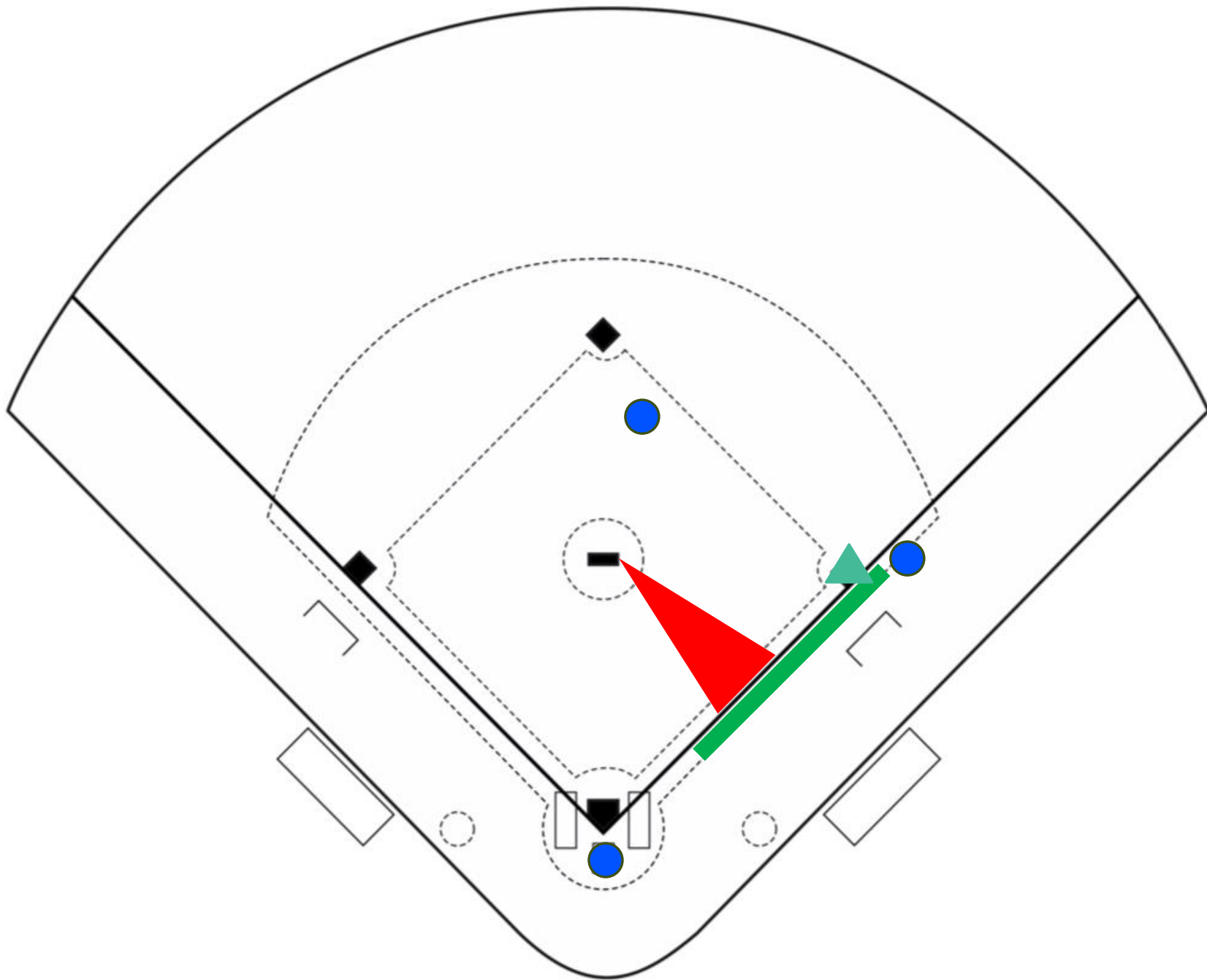
* Pause/Read/React

*Run/Read/React



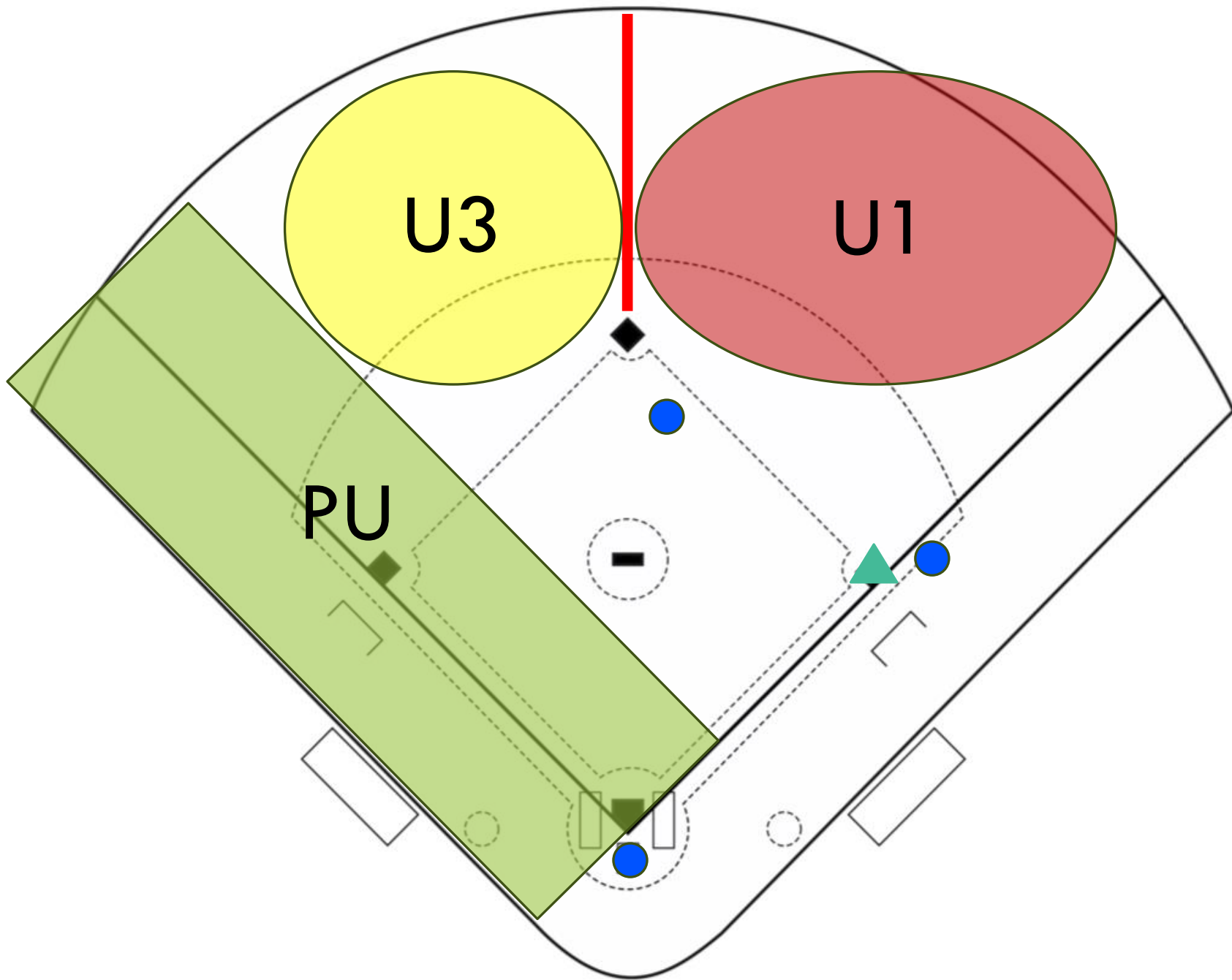
LHP legal pick to first base.

NOTE: F1 must step ahead of the throw.
Use the 1B cutout as a directional guide.



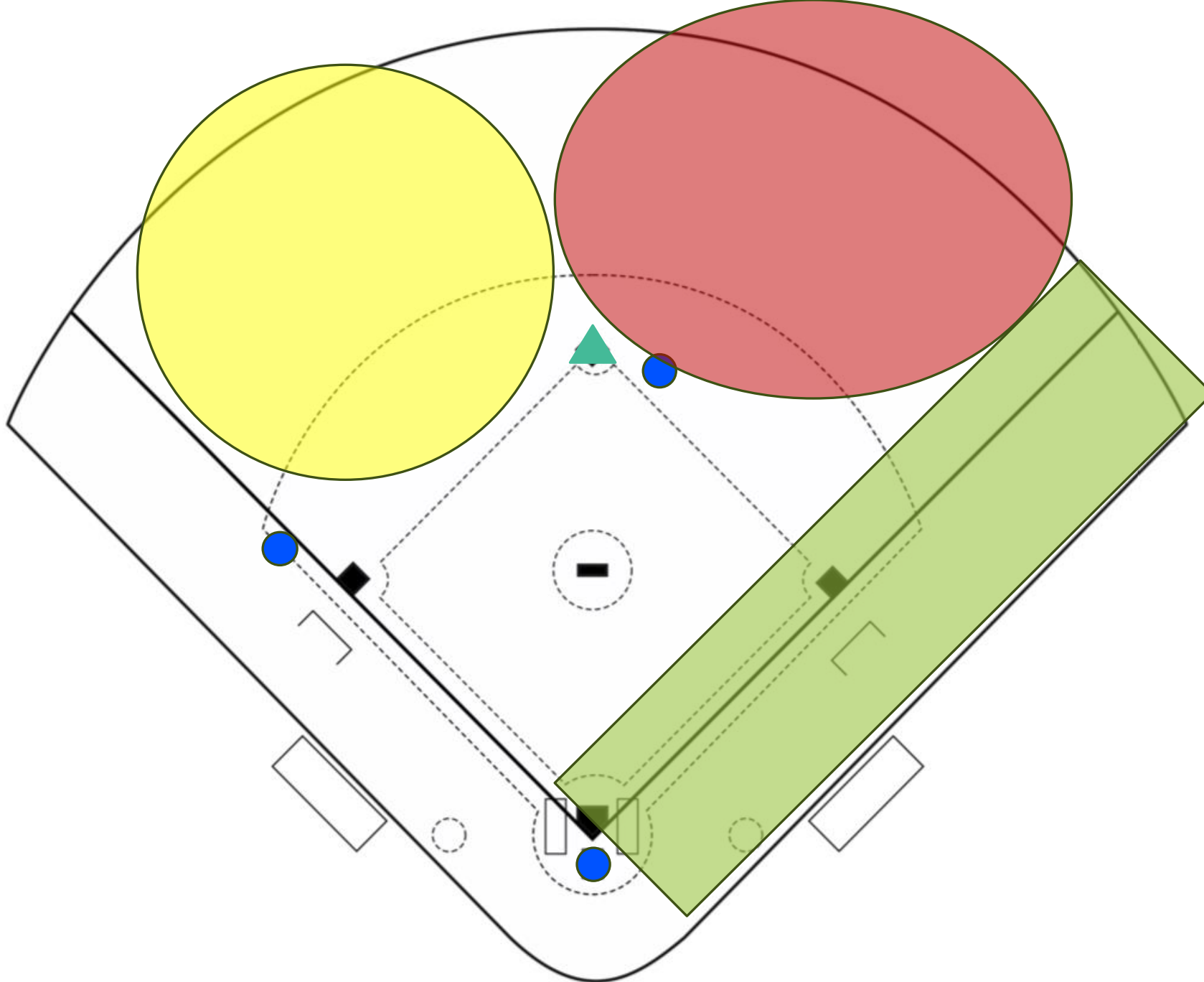
LHP pick to first
base, BALK

NOTE: IF F1 steps
towards the 45' lane,
that is a BALK. The
45' is for the BR not
F1.



Runner(s) on base:

PU will always have
F/F when there is
no umpire on the
wing.

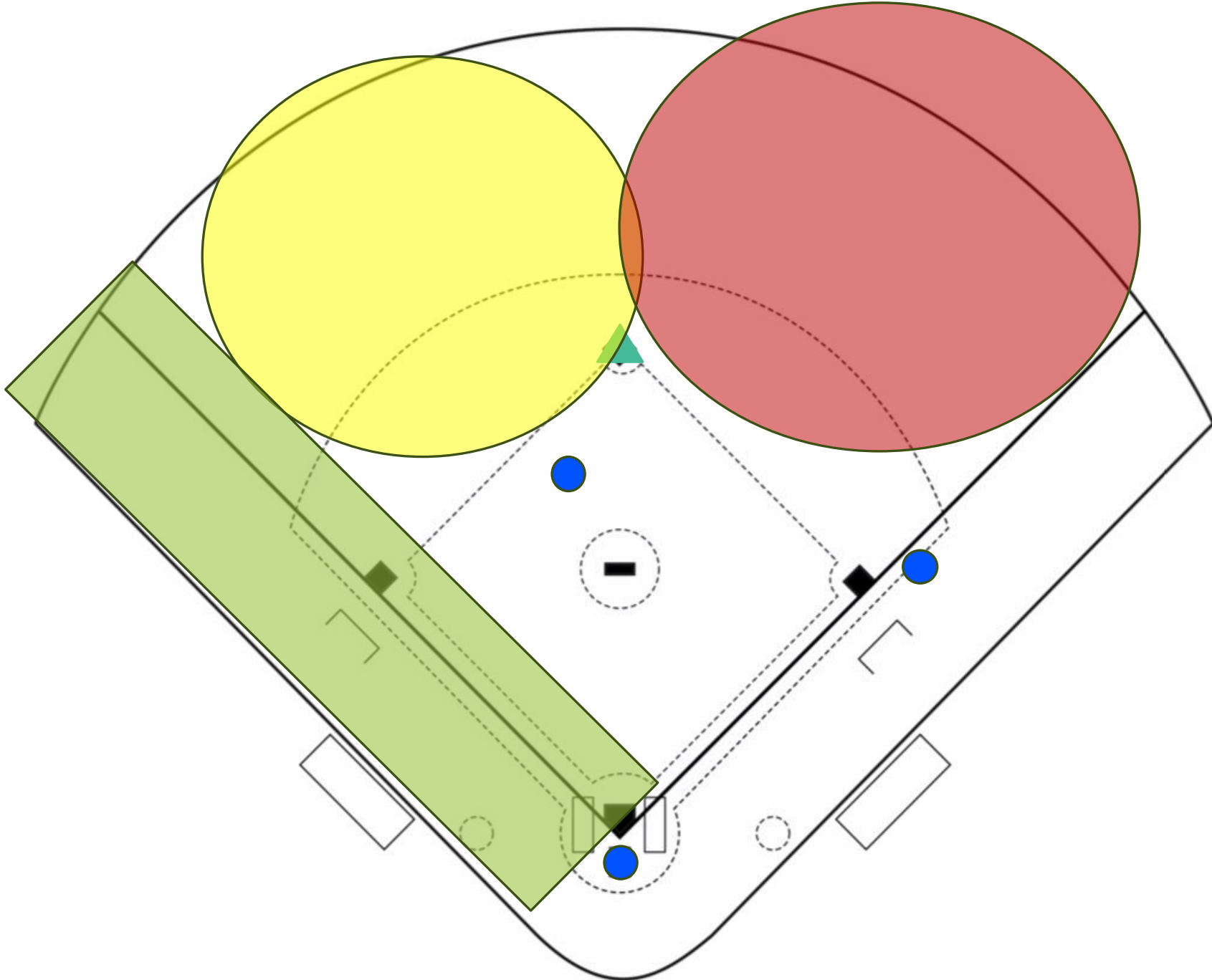


2nd only, less than two:

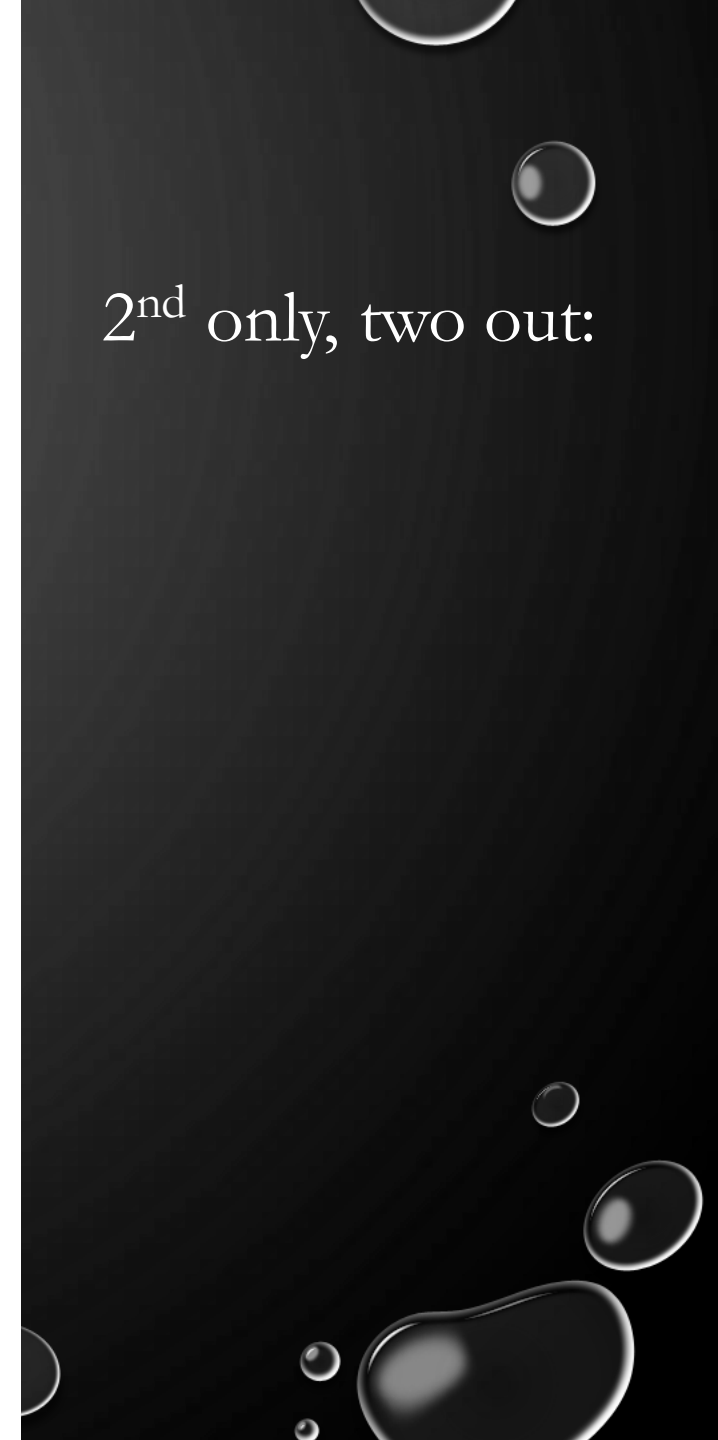
U1 has all fly ball from CF to RF

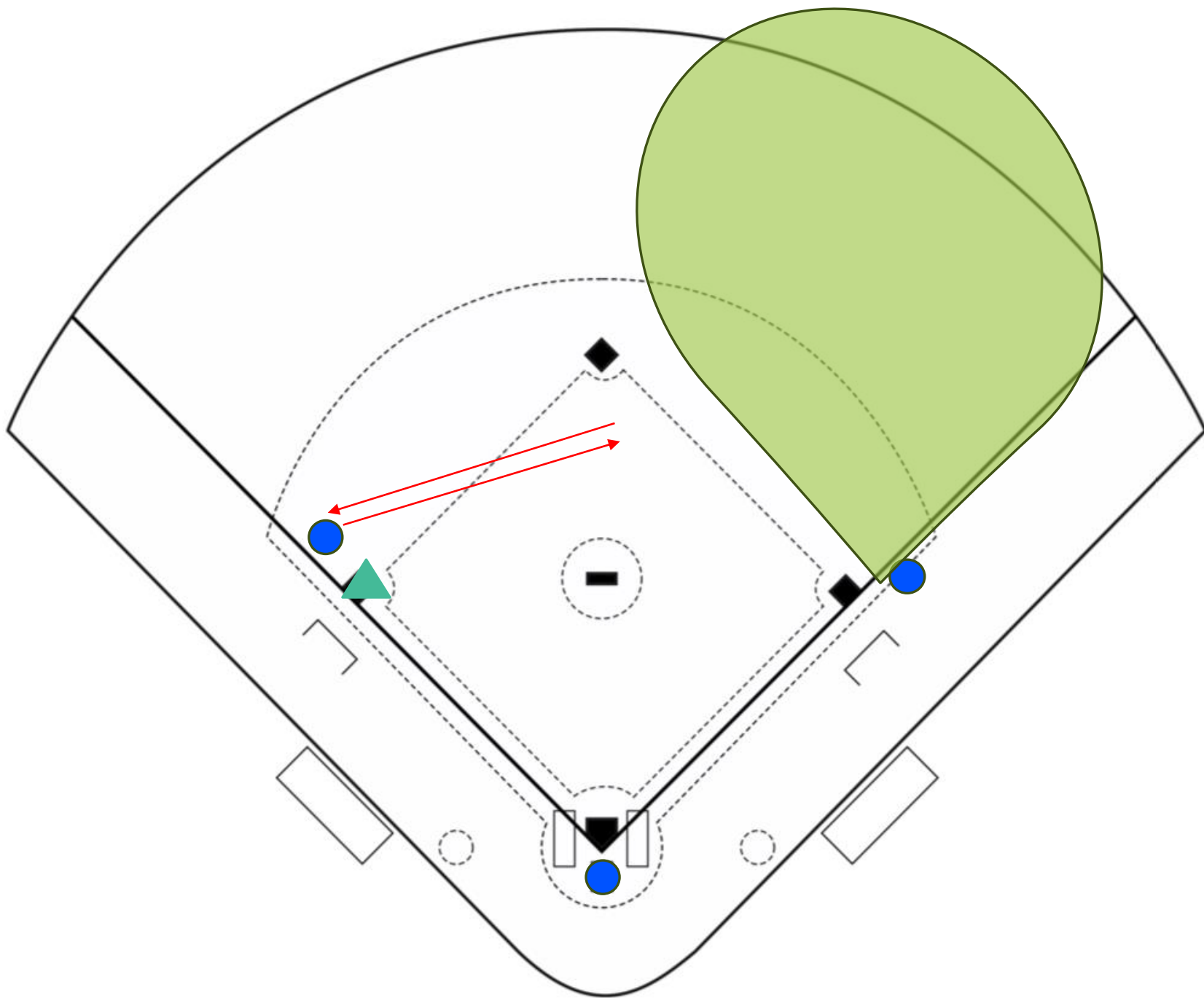
PU has all line bounding balls

U3 has R2's tag up



2nd only, two out:



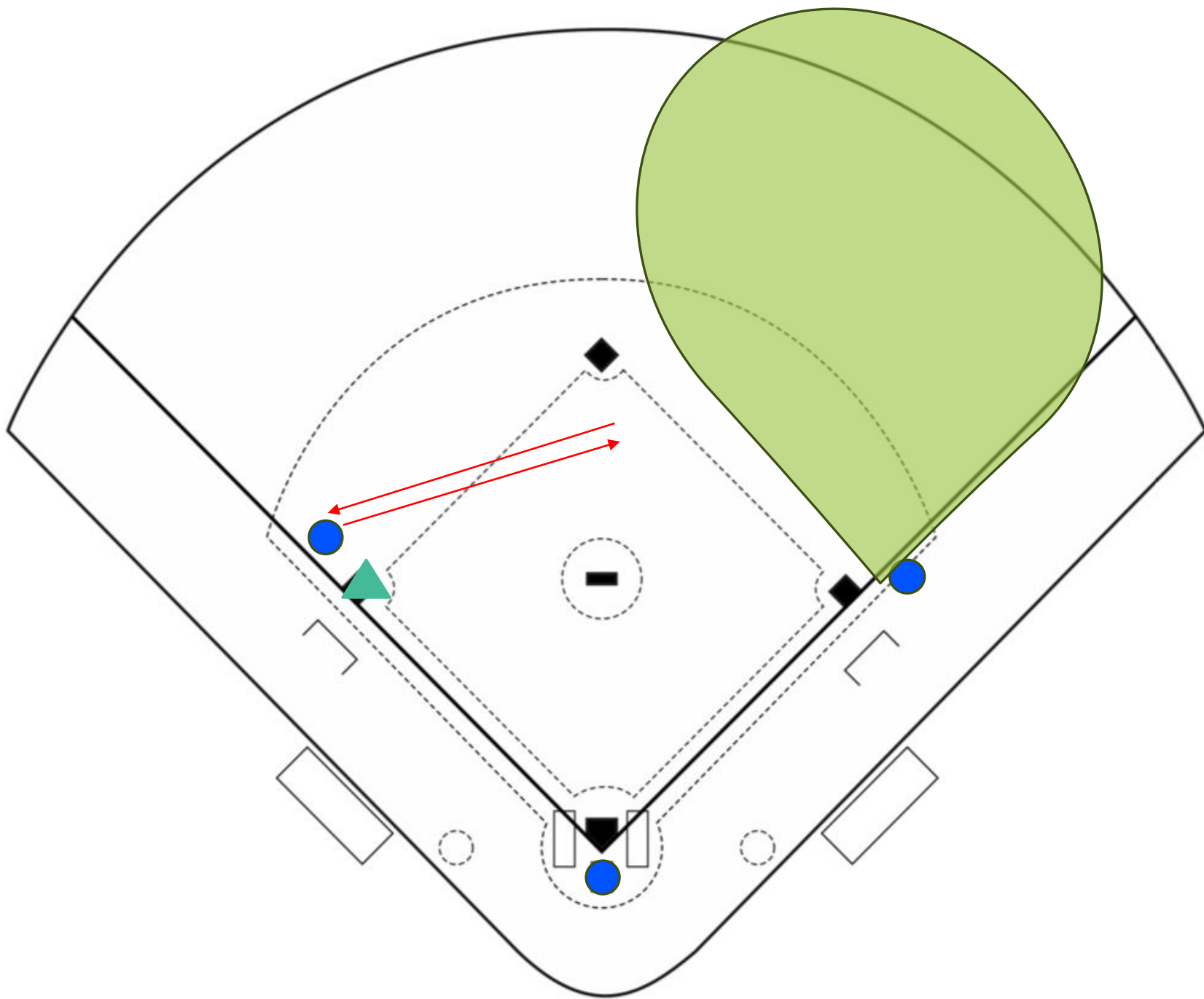


R3, less than 2 out:

U1 ready routine
from A, goes on
trouble

U3 Must run into
the infield for all
plays on BR into 2B
and beyond.

PU has R3's tag up



R3, 2 out:

U3 has BR into
second and into
3B